

RAM EDITION

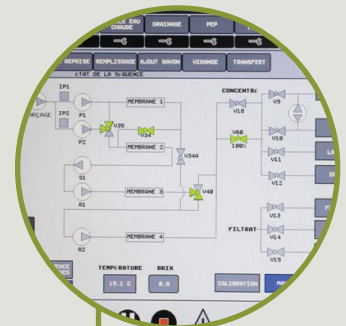
DOMINION & GRIMM

THE ONLY TRULY AUTOMATED AND FLEXIBLE
REVERSE OSMOSIS



FEATURES & EQUIPMENT

- 600 and 1000 gallon models
- Programmable cycle sequence. 10 different programmable and flexible sequences each comprising 14 cycles
- Stop, start and arrangement of cycles according to the conditions set by the operator
- User-friendly and intuitive Schneider touchscreen on mobile console
- Autonomous, no connection to external servers required for full platinum automation
- Remote access to all device functions and controls (PLC)3



**SCHNEIDER
TOUCHSCREEN
CONSOLE**

8 DIFFERENT CONFIGURABLE OPERATING CYCLES COVERING ALL OPERATIONS:

1. Concentration
2. Desugaring
3. Rinse
4. Hot water cycle
5. Alkaline wash cycle
6. Acid wash cycle
7. Drainage
8. PEP – (Membrane permeability test)

REMOTE ACCESS to all functions and controls of the device (PLC)

- Stop and start of cycles
- Sequence management of cycles
- Data and Reports

All **STAINLESS STEEL** piping

ALL IMPELLERS are made of stainless steel

ALL ELECTRICAL AND AUTOMATION COMPONENTS are from Schneider

AUTOMATIC DRAINAGE at the end of each cycle. The piping is drained to the appropriate basin depending on the operation.

AUTOMATIC DE-SUGARING at the end of the concentration cycle.

FULLY AUTOMATED MANAGEMENT OF THE PEP (pressure and temperature) with on screen or email reports

TANK MANAGEMENT: Programmed selection of the tank sequence and automated valve operation without user intervention

EMAIL ALARMS if there is an unscheduled shutdown of the Osmosis (pressure, temperature, lack of water, lack of filtrate during de-sugaring, etc.)

WASH CYCLES: Continuous automated management of the desired soap level, temperature and pH during acid or alkaline washes

UPDATES AND REMOTE DIAGNOSIS by the Dominion & Grimm team