

TUBES FUSION

- Process to combine tubes and fittings
- Fusion bonding of endings

Advantages:

- Eliminates leaks
- Protects tubing by creating a shell against the weather
- Increased output and performance
- Saves time and money on labour

8 easy electrofusion steps:

- After flattening them, align the ends of the tubes
- Set the welding by adjusting the heat
- Melt the material by joining the ends
- Prepare the tubing surface for better adhesion of the fusion and electrofusion fittings
- Screw the saddle on the tube (B)
- Insert the coupler on the saddle (C)
- Activate fusion using the scanner (D)
- Let the fusion cool down

A HIGH DENSITY BLACK POLYETHYLENE MAINLINE TUBING (ELECTROFUSION)

467691 1" black, 500'	469053 1 1/2" blue, 500'
469008 1 1/4" black, 500'	469060 1 1/2" blue (spool), 3500'
469015 1 1/4" black (spool), 4000'	469077 2" blue, 500'
466403 1 1/2" black, 500'	469084 2" blue (spool), 2000'
467561 1 1/2" black (spool), 3500'	
466410 2", 500'	
467585 2" black (spool), 2000'	
467592 3" black (spool), 800'	



A



ALL YOUR POLYETHYLENE TUBING IS FUSIBLE WITH ALL TYPES OF FITTINGS ON THE MARKET

FITTINGS FOR MAINLINE (ELECTROFUSION)

B SADDLES

- 467752 1 1/2" X 1"
- 467769 2" X 1"
- 468933 3" X 1"
- 468940 3" X 1 1/4"

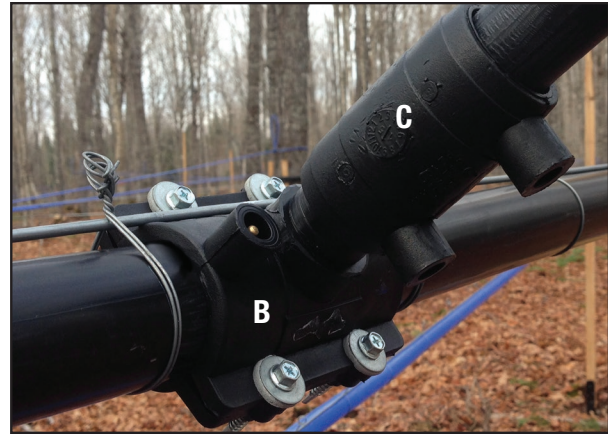
C COUPLERS

- 467721 1"
- 467738 1 1/2"
- 467745 2"
- 468926 3"

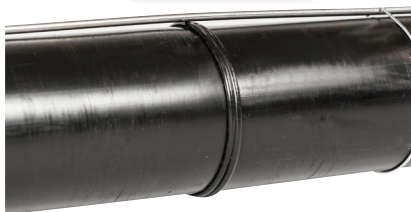
TE FUSION

- 468834 1" TE fusion

OTHER SIZES AND FITTINGS AVAILABLE



FUSION



ELECTROFUSION UNIT PURCHASE OR LOCATION



FOR MORE INFORMATION, CONTACT info@dominiongrimm.ca

QUEBEC & MARITIMES

1.866.351.2811

ONTARIO & WESTERN CANADA

1.877.676.1914

DG USA

1.802.524.9625